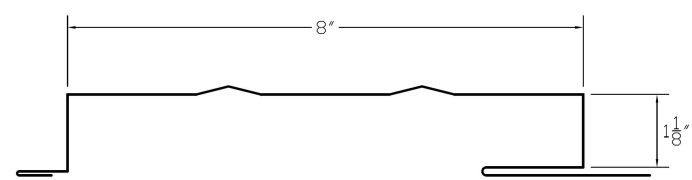


TITANTEK™ FLUSH PANEL Variants

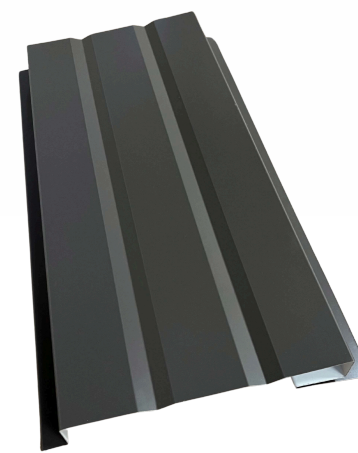
TitanTek has re-engineered the **Flush Panel** to address oil canning issues commonly associated with Flush Panel installations. Originally designed for soffit applications, the Flush Panel has become a popular choice for metal wall claddings. However, due to substrate inconsistencies, framing irregularities, and installation errors, even perfectly manufactured flush panels can reflect wall imperfections or be over-torqued, leading to oil canning. The **TitanTek Flush Panel Variants** are specifically designed to provide no-reveal aesthetics with a more resilient panel profile.



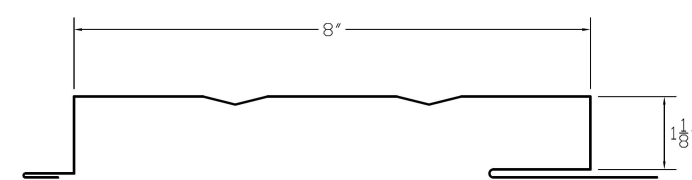
FP8VO



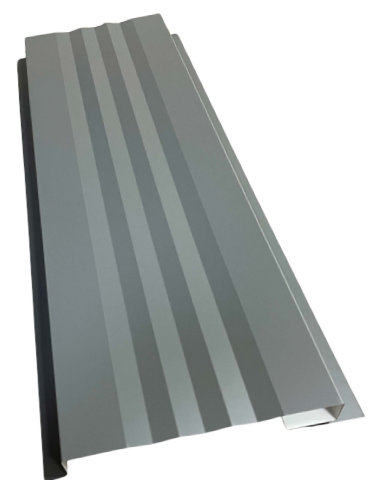
FP8VO PANEL (SIDEVIEW)



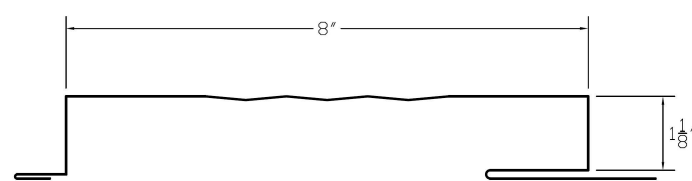
FP8VI



FP8VI PANEL (SIDEVIEW)



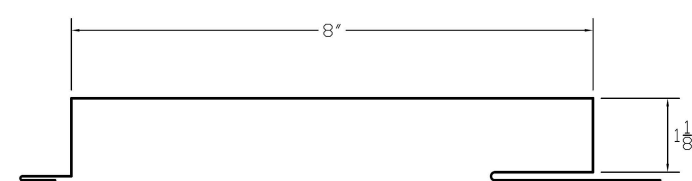
FP8ST



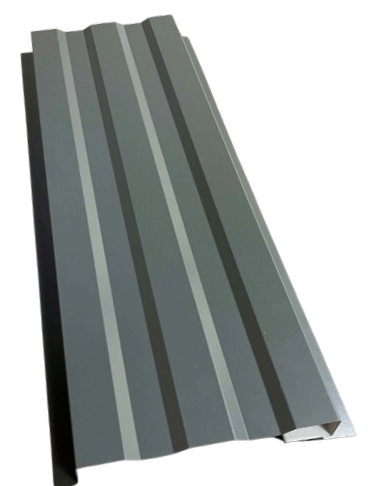
FP8ST PANEL (SIDEVIEW)



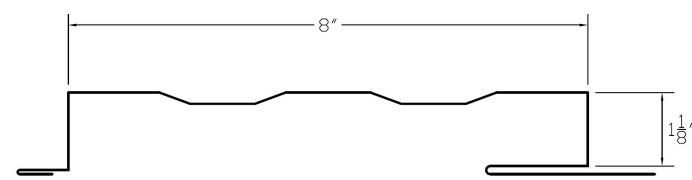
FP8



FP8 PANEL (SIDEVIEW)



FP8B



FP8B PANEL (SIDEVIEW)



Available in All
TitanTek colors.
Download the PDF
Color Cards at:

www.TitanTekAMP.com

Standard Widths	Available In Lengths	Materials	Testing / Certifications
8"	2-20 Feet	Galvalume: 24 GA, 22 GA; Aluminum: .040, .032	ASTM E283, E330, E331, E1592

For more information or to speak with a TitanTek representative, please send your contact information to info@TitanTekAMP.com